

Public Safety Map Book Information

What is the purpose of the Public Safety Map Book and Grid?

-) Provides a region-wide common map grid for communicating a geographical area for mass notification and evacuation.
-) Provides an Evacuation Field Checklist
-) Supports situational awareness mapping tools.
-) Supports the public SDEmergency Map.
-) Provides mapping tools to support mass notification and evacuation.

How was the Public Safety Map developed?

The Public Safety Map Book was developed through a collaborative process between law enforcement, fire services, emergency managers, communications centers and GIS staff.

Where can I get the mapping tools?

You can view the **Web Mapping Application** here:

<http://arcg.is/2dNKch6>



You can download the **PDF Mobile** here:

https://rpsg.chulavistaca.gov/mapbook/PSMap_Mobile.pdf



You can download the **PDF Print** here:

https://rpsg.chulavistaca.gov/mapbook/PSMap_Print.pdf



Who do I contact for support?

This project has been developed with support from the San Diego Regional Public Safety Geodatabase, a program of the Unified Disaster Council.

The County of San Diego Office of Emergency Services has staff assigned to provide support.

For support, contact: SanMAPS@sdcounty.ca.gov

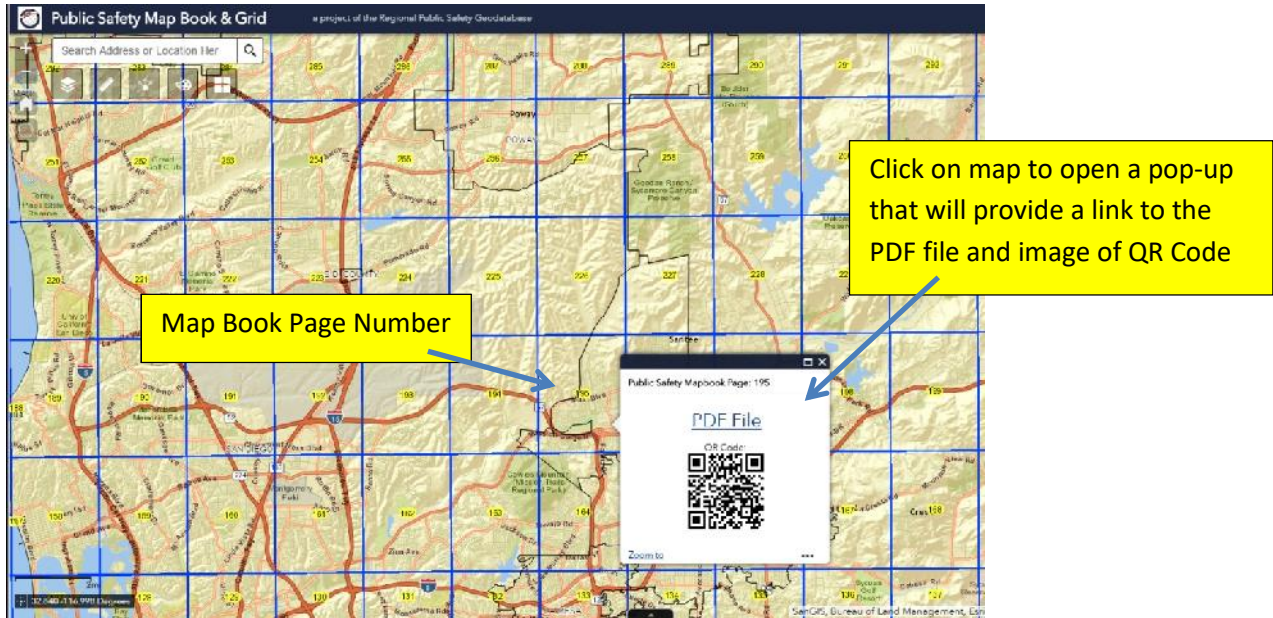
Public Safety Map Book

Web Map Applications Instructions

1. Open the web map application <http://arcg.is/2dCxhOI>

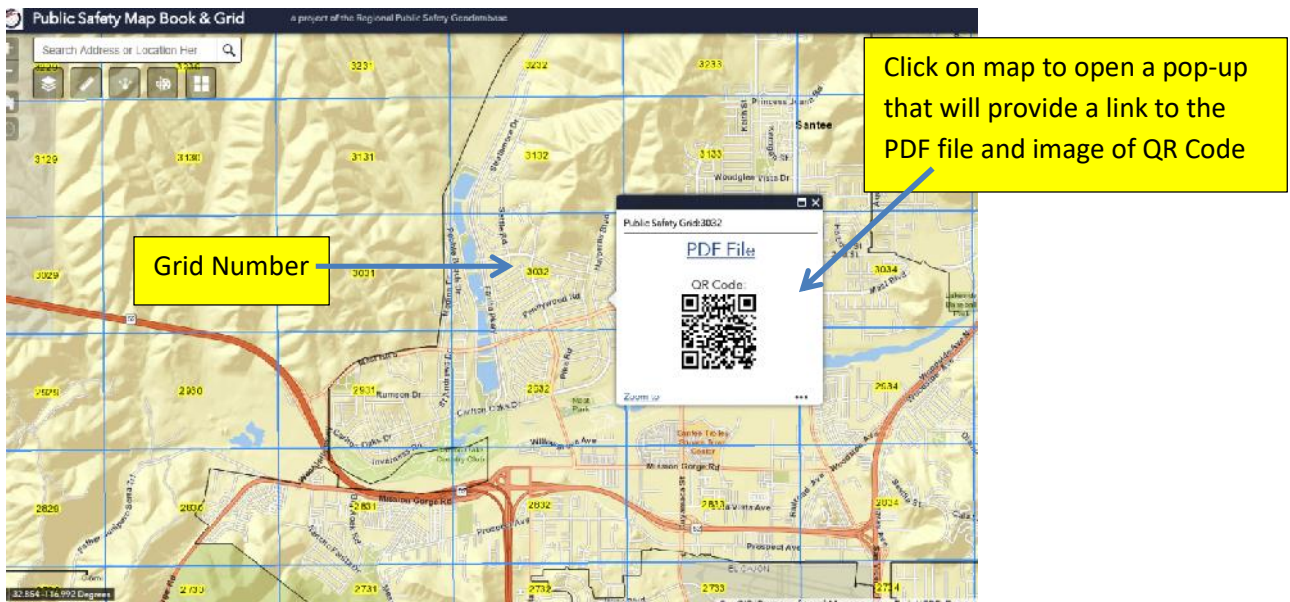
2. Level one view – map zoomed out

The map book pages will display



2. Level 2 – begin zooming in

The map grid numbers will display

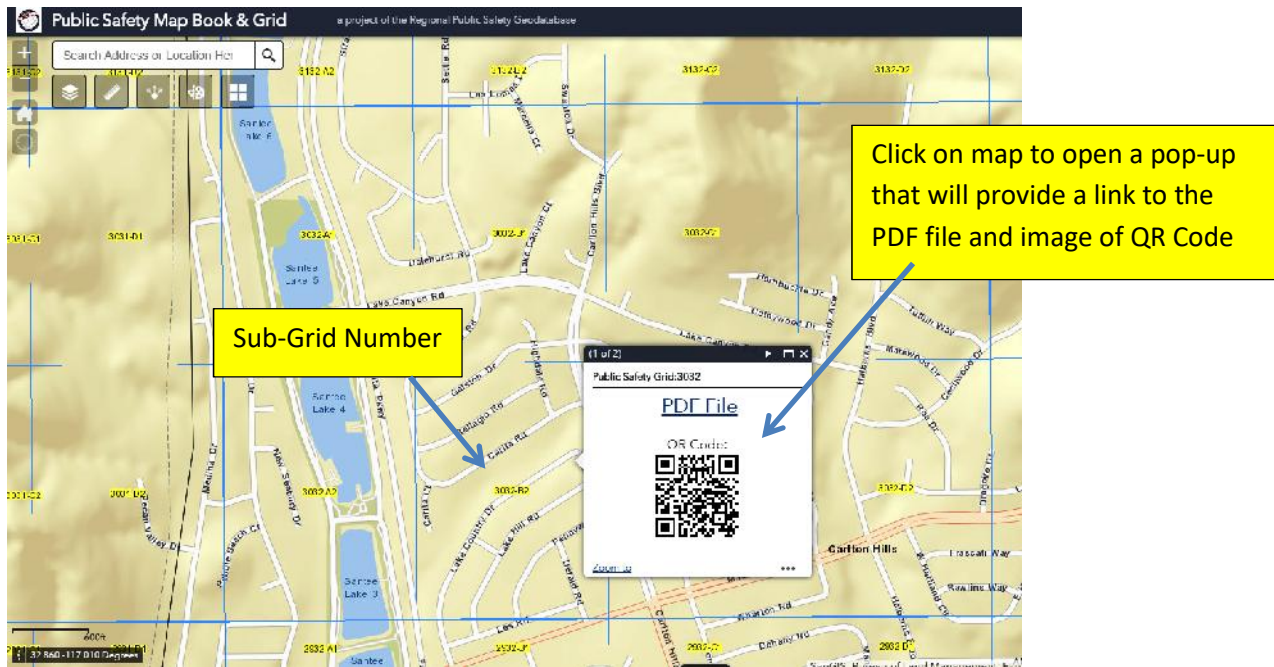


Public Safety Map Book

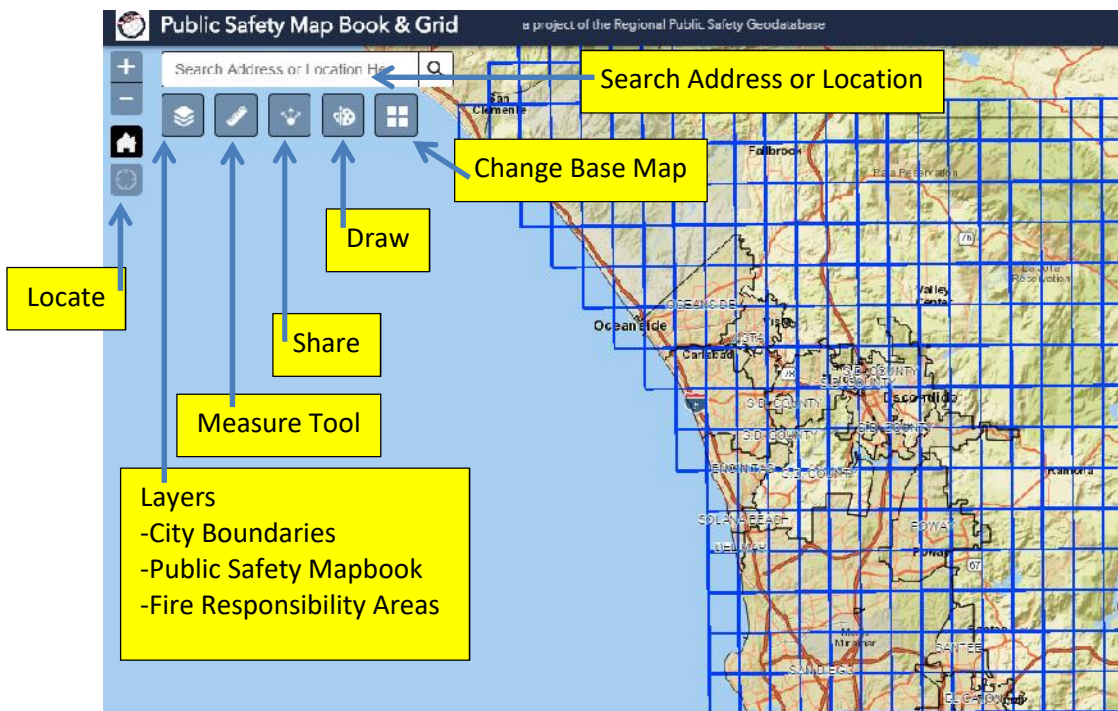
Web Map Applications Instructions

3. Level 3 – map zoomed in

The map sub-grid will display



4. Other Features





I. LEVELS OF COMMAND

- ☐ **Agency Representative** – An incident whereby law enforcement is assisting the fire department with operations which does not require unified command roles, responsibility or authority. In this instance the law enforcement representative will respond to the command post and interface with the fire department incident commander and attend all cooperators meetings, planning meetings and operational briefings.
- ☐ **Unified Command** – An incident whereby law enforcement has jurisdictional responsibilities within the incident. In this instance the law enforcement Sergeant level or above will respond to the command post and become the Unified Law Enforcement Incident Commander. It is imperative this person remain at the ICP and stay in constant contact with the fire department Unified Incident Commander. All Unified Incident Commanders will be authorized to make command level decisions, and expend funds on behalf of their Department.

II. EVACUATIONS

This document will assist Law Enforcement and Fire Department personnel in the implementation of an evacuation plan. It is designed to provide coordination, collaboration, and improve efficiency in accomplishing all identified incident objectives.

Evacuation Definitions:

- ☐ **Evacuation Order** – Movement of community members out of an affected area due to an immediate threat to life and property from an emergency incident.
- ☐ **Evacuation Warning** – Alerting of community members in a defined area of a potential threat to life and property from an emergency incident. An evacuation may be ordered as a result of the threat. Threat is usually in excess of 2 hours.
- ☐ **Shelter in Place** – Directing community members to stay secured inside their current location. Only used if the safety of the citizens can be assured if they remain; or if evacuation will cause a higher potential for loss of life.

Road Closure Definitions:

- ☐ **Hard Closure** - Closed to all traffic except Fire and Law Enforcement
- ☐ **Soft Closure** - Closed to all traffic except FD, LE and critical incident resources (i.e. utility companies CalTrans, County Roads, etc.)
- ☐ **Resident only Closure** – Soft closure with the additional allowance of residents and local government agencies assisting with response and recovery.

Note: Media is allowed access under all closure levels unless prohibited under PC 409.5



Evacuation Checklist

This checklist is intended to assist field supervisors in the initial stages of a fire or other emergency requiring evacuations where the Fire Department is the authority having jurisdiction. These guidelines are flexible and can be modified to address specific field situations:

FIRE

- ☐ Assume command of the incident
- ☐ Conduct a situation assessment and evaluate need for evacuations
- ☐ Establish an incident command post with sufficient room for representatives from other assisting agencies and announce its location
- ☐ Request Agency Representative from Law Enforcement to respond to the ICP

LAW ENFORCEMENT

- ☐ Respond supervisor of the rank of Sergeant or above to the Incident Command Post, and request for another Deputy to be located with Operations Section Chief
- ☐ Maintain ingress and egress routes for emergency vehicles
- ☐ Establish perimeter control, keep unauthorized vehicles and pedestrians out of involved area
- ☐ Conduct evacuations if required at the direction of the Incident Commander
- ☐ Notify the Incident Commander of evacuations, which may have taken place prior their arrival
- ☐ Establish anti-looting security patrols for evacuated areas within the perimeter when safe to do so
- ☐ Identify temporary evacuation points and shelters for citizens and animals
- ☐ Maintain a Unit log

JOINT FIRE/LAW RESPONSIBILITIES

- ☐ Evaluate and determine whether Law Enforcement role will be as an Agency Representative or Unified Incident Commander depending on the scope of the incident
- ☐ Assign a Law Enforcement supervisor to work closely with the Operations Section Chief or Incident Commander, whoever is determining areas to be evacuated.
- ☐ Assess and validate the need for an **Evacuation Warning**, **Evacuation Order**, and/or **Shelter in Place**. Determine the location, potential size and direction of incident travel or spread.

San Diego Operational Area
Fire Service and Law Enforcement - Joint Operations



- ☐ Unified Commanders Determine potential for incident spread and request appropriate resources to complete evacuation and mitigate incident concurrently
 - Identify areas that must be immediately evacuated and label “evacuation order” areas.
 - Identify areas that should be notified of the likelihood of evacuations within a two hour time frame and label “evacuation warning” areas.
- ☐ Identify traffic control points and Levels of Closure
 - Hard Closure - Closed to all traffic except Fire and Law Enforcement
 - Soft Closure - Closed to all traffic except FD, LE and critical incident resources (i.e. utility companies CalTrans, County Roads, etc.)
 - Resident Only Closure_– Soft closure with the additional allowance of residents and local government agencies assisting with response and recovery.
- ☐ Determine and disseminate evacuation routes
- ☐ Complete initial Evacuation Plan utilizing San Diego County Public Safety Grid pages as a common map reference.
- ☐ Advise the appropriate Law Enforcement Communications Center utilizing the Public Safety Map Grids for notification of Evacuation Warnings and Evacuation Orders via the Alert San Diego regional notification system.
- ☐ Coordinate closely with Command and General Staff managing the incident.